

Installing OpenSSO

Author by: Orhan Alkan

Date: August 2006

Version: 1.0

Table of Contents

Overview.....	3
Installing OpenSSO Server.....	4

Overview

OpenSSO has been available recently. I am very interested in this exciting project. As the project very new, there is not so much documentation and tested scenario about it. My aim is to share my experience and the knowledge that I acquired during my learning curve with other people.

This document is about how-to install OpenSSO. It will be completed in time as I am learning.

I assumed the people reading this document have basic level of knowledge on java, application servers and unix operating system.

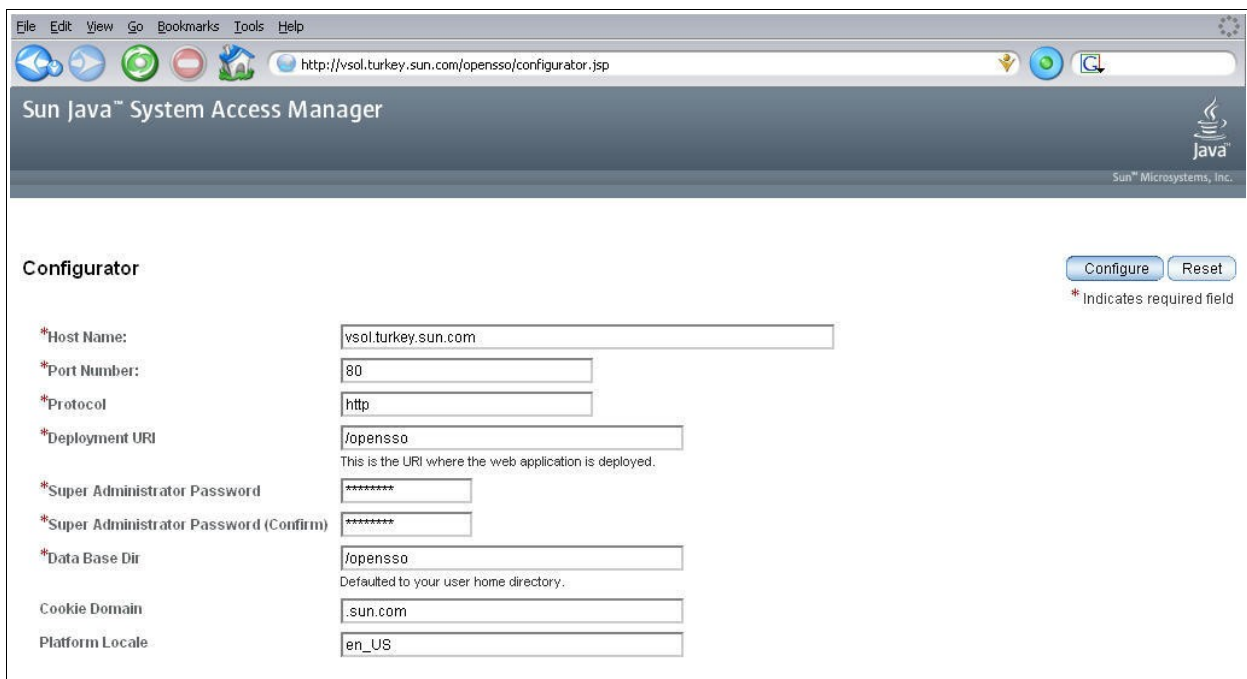
Installing OpenSSO Server

I assume ;

- you already downloaded opensso.war file. You can find it at <http://download.java.net/general/opensso/nightly/latest/opensso.war> or built it by yourself (for more information <http://download.java.net/general/opensso/nightly>)
- You already uploaded opensso.war as web application on one of the supported java container

The steps for installation as follows ;

- Type `http://<your server name>:<port_number>/opensso`. You will be directed `http://<your server name>:<port_number>/opensso/configurator.jsp`
- Fill the form up. Here is a sample screen-shut.



The screenshot shows a web browser window displaying the "Sun Java™ System Access Manager" configurator. The browser's address bar shows the URL `http://vsol.turkey.sun.com/opensso/configurator.jsp`. The page title is "Sun Java™ System Access Manager" and the Sun Microsystems logo is visible in the top right corner. The main content area is titled "Configurator" and contains several form fields with labels and values:

Field Label	Value
*Host Name:	vsol.turkey.sun.com
*Port Number:	80
*Protocol:	http
*Deployment URI:	/opensso
<small>This is the URI where the web application is deployed.</small>	
*Super Administrator Password:	*****
*Super Administrator Password (Confirm):	*****
*Data Base Dir:	/opensso
<small>Defaulted to your user home directory.</small>	
Cookie Domain:	.sun.com
Platform Locale:	en_US

At the top right of the form area, there are two buttons: "Configure" and "Reset". Below the buttons, a note states: "* Indicates required field".

The meaning of the fields are as follows;

Hostname : The DNS name or the IP address of the server on which you are installing OpenSSO

Port Number: Web container's port number

Protocol: It could be HTTP or HTTPS depending your implementation.

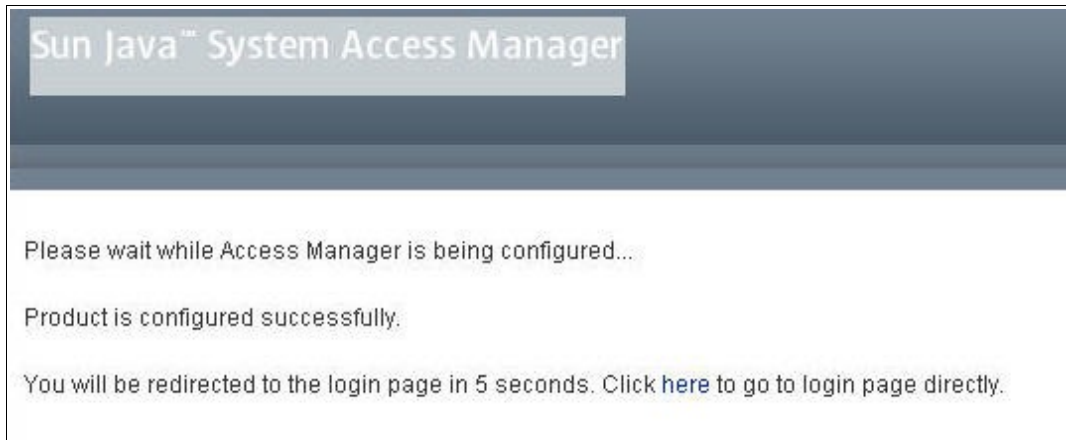
Super Administrator Password : Password for the super user, amAdmin

Data Base Dir : The current version stores configuration data on file system. You should specify full path for datastore .

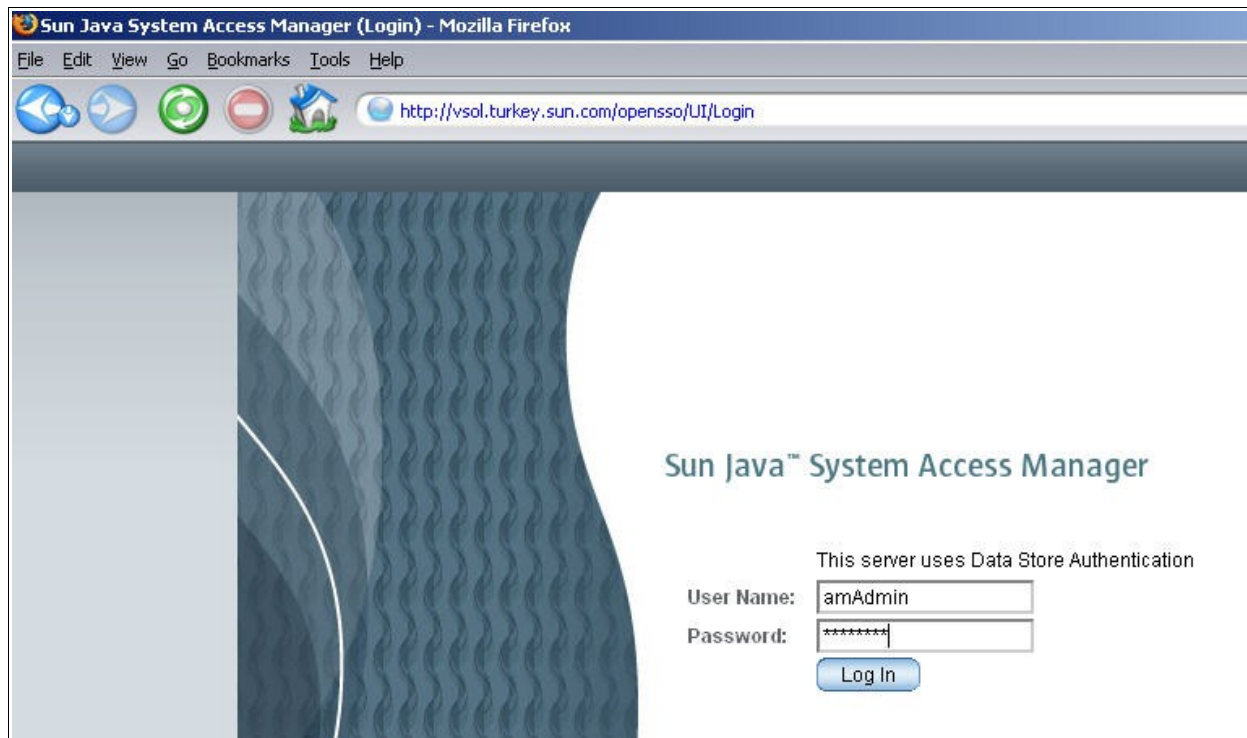
Cookie Domain: SSO Domain name.

Platform Locale: Language code you are already using

- Click on “Configure” button. Configurator.jsp starts processing your request and if it is successful, you will see the messages like the following



- After successful installation, you will be directed OpenSSO login page.



- Type username as “**amAdmin**” and the password you gave at configuration page
- Congratulation ! Now you are in !



Realms

Search

Realms (1 Items)	
Realm Name	Location
<input checked="" type="checkbox"/> <input type="button" value="New..."/> <input type="button" value="Delete"/> opensso	opensso