

Rebuilding the Netbeans Environment for Java CAPS 6

Holger Paffrath, December 2008

There may be times where in a Repository based project, the Netbeans environment will have to be re-built or you will have to re-install Netbeans. Alternatively, you may find that after installing Netbeans for Java CAPS, you no longer have access to the Repository.

The following steps will show you how to re-attach Netbeans to the repository.

Cleaning Out A problematic Netbeans

For those with Netbeans already installed, but you have problems, these steps will clear out the Java CAPS repository components allowing for a re-install.

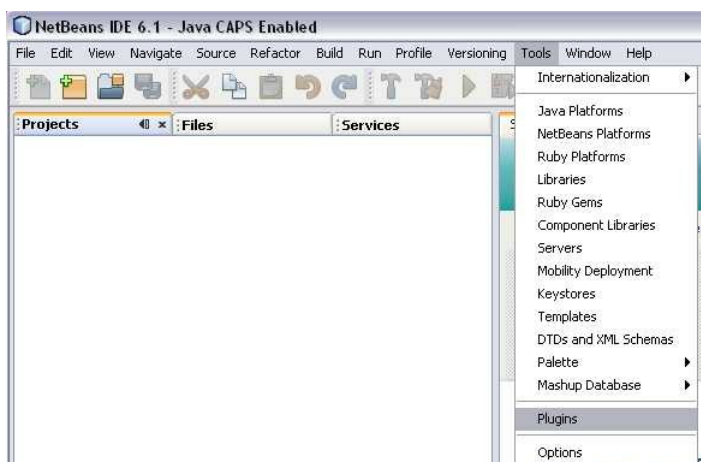
- Close Netbeans if its already open.
- Go Into your Java CAPS directory and find the .Netbeans directory. Inside, you will see a "caps" directory. Rename this directory to "capsbak". This directory can be deleted after the re-install.

Your Netbeans should now be in its default state as if it was installed on its own.

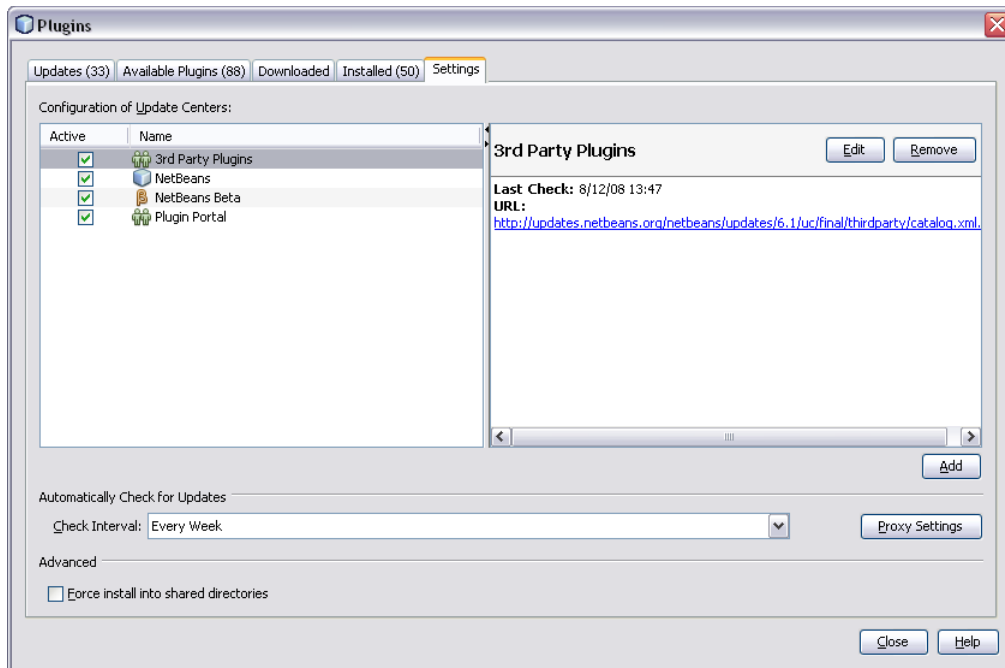
- Start Netbeans again. You will be asked to agree to the license agreement - accept the agreement to continue.

Adding the CAPS Repository Plugins

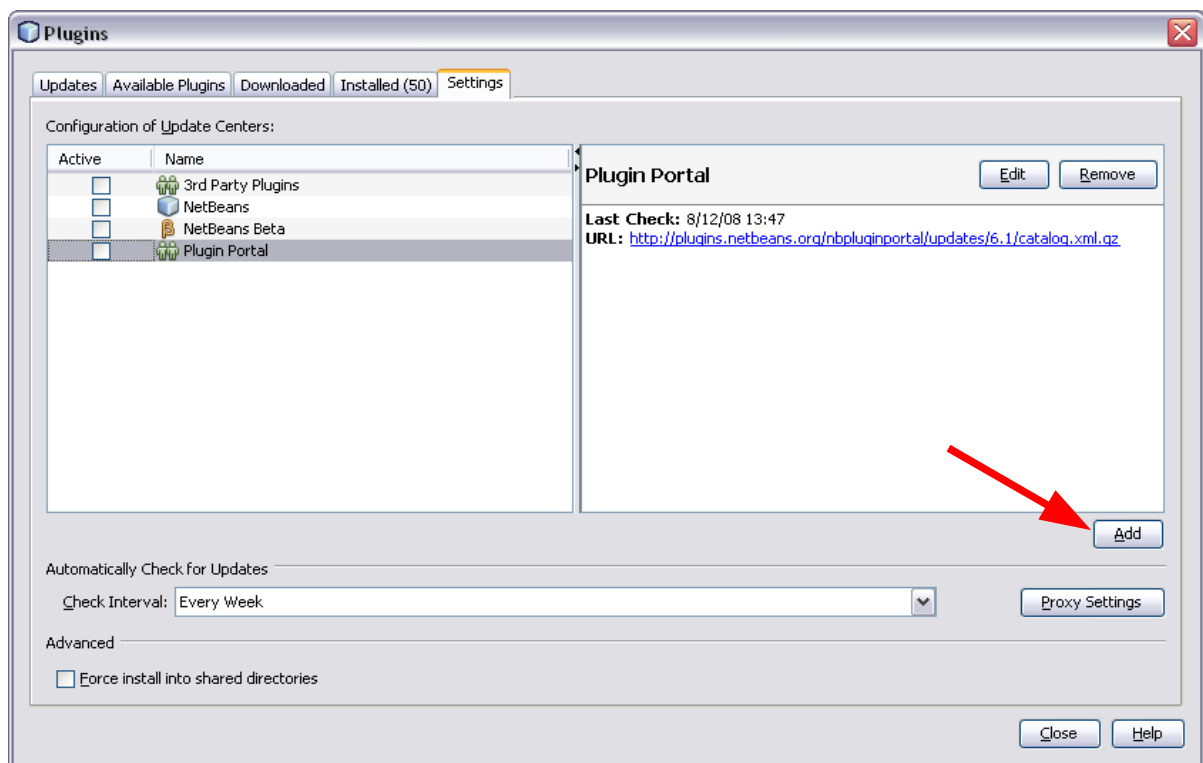
Next Select Tools, then Plugins.



The Plugins window will appear. Click the Settings Tab to bring up the Plugin Settings.



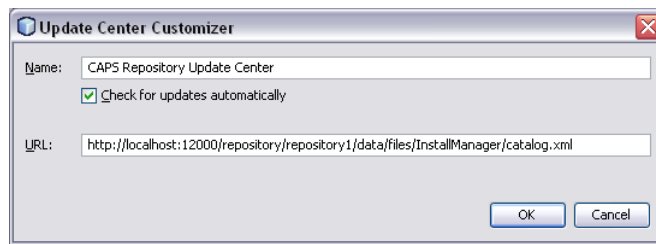
Un-check all the plugins, we don't need them.



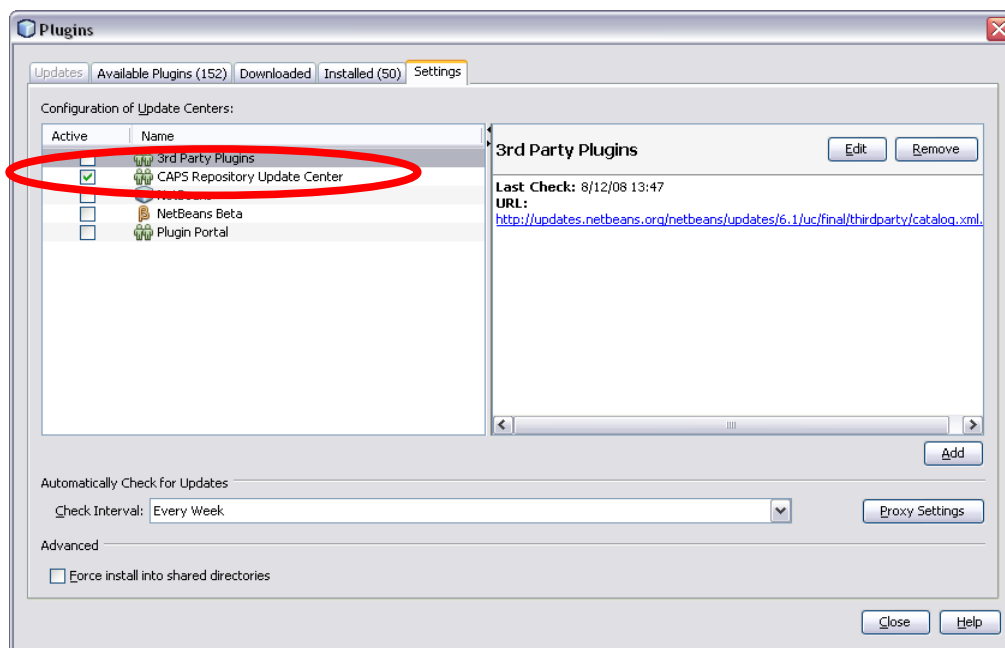
Then click on the “Add” button to add a new Plugin update centre.

For the Name, enter “CAPS Repository Update Center”

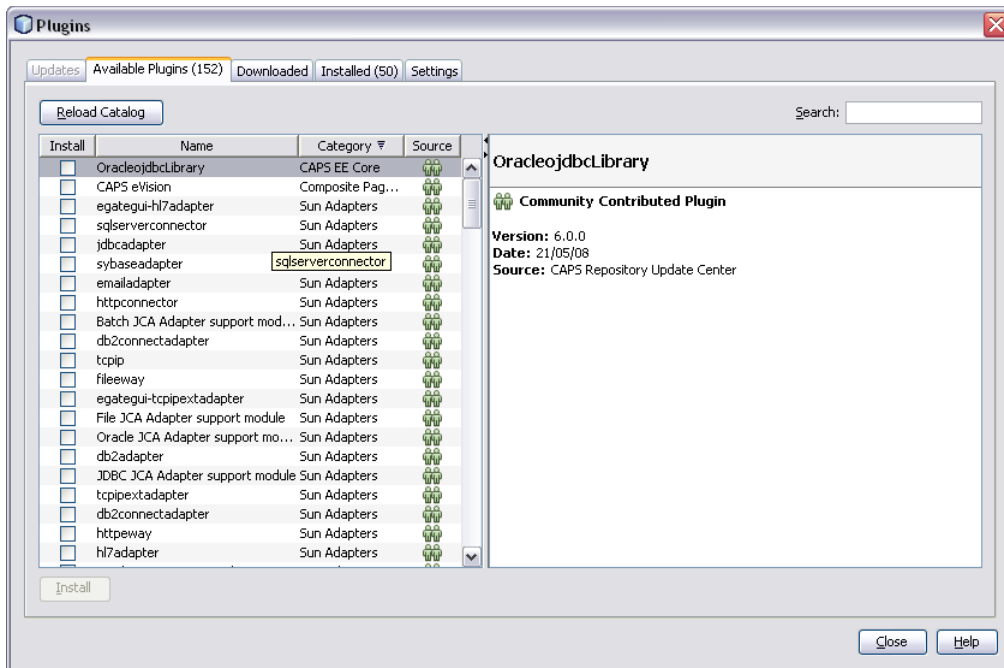
For the URL, enter
“<http://localhost:12000/repository/repository1/data/files/InstallManager/catalog.xml>” remember to change the localhost value to your repository server and click OK.



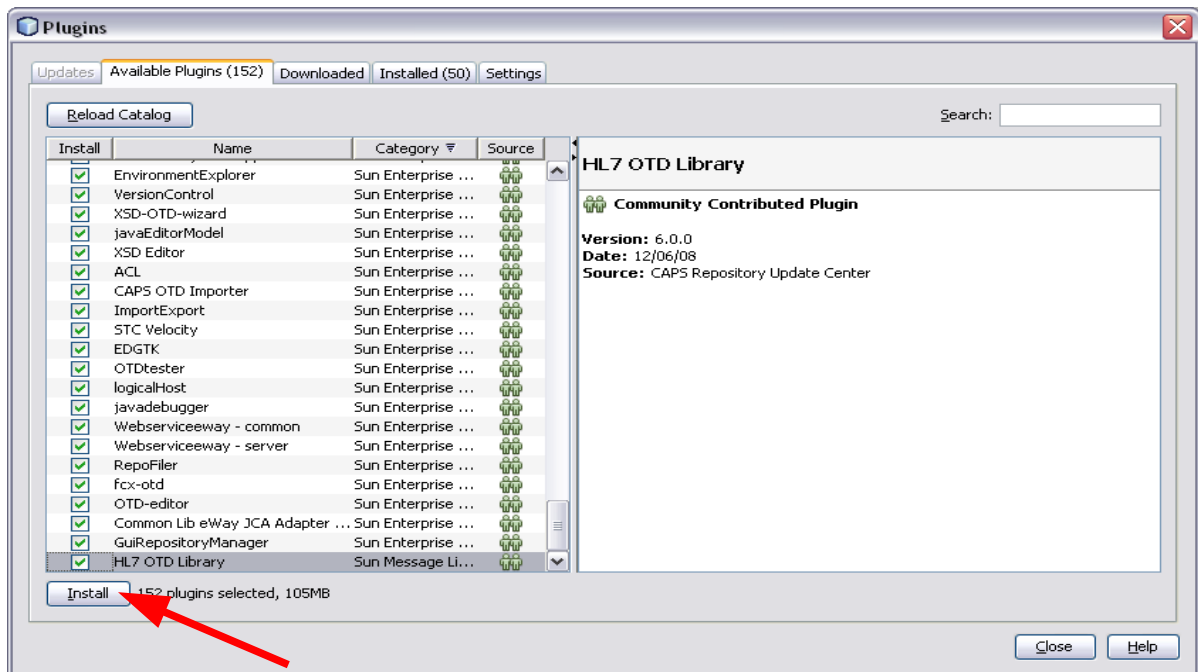
The new Update Centre will be added.



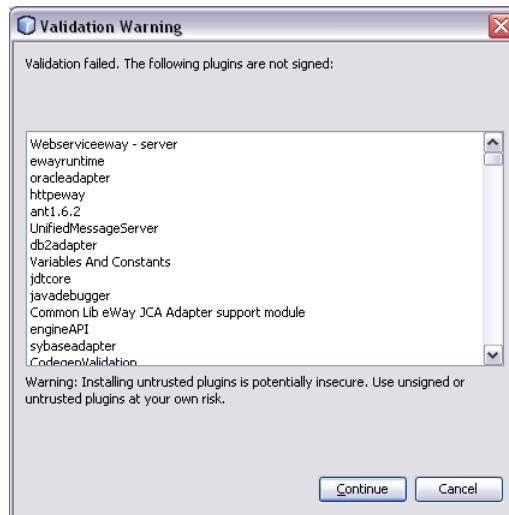
Next, Select the Available Plugins Tab, and select ALL the plugins. There is quite a few and there is no "Select All" option so you have to add them the hard way. One way to make it a little quicker is to use the down arrow and space bar to select each plugin.



Once all the plugins are selected, click the “Install” button.



The plugins will be downloaded and installed. Continue on the Validation Warning.



Once all the plugins have been installed, the IDE will re-start and you will be back to having the Java CAPS Repository components.

You will need to re-open your projects as the current list of open projects was stored in the .Netbeans directory which is now re-created.