

# OpenDS and Adempiere Integration: A How to Guide

## About OpenDS

OpenDS is a 100% pure Java, open source, directory server designed for large deployments. To know more about OpenDS visit its homepage.

For installation instructions download ["Quick Setup" Web Start installer](#) and read [step-by-step instructions](#). As far as integration of OpenDS goes, the values of installation path, LDAP listener port, administrative User DN/password and the Directory Base DN, that you provide during installation are critically important.

## About Adempiere

[Adempiere](#) is a ERP/CRM suite based on [Compiere](#). To know more about Adempiere read the [tutorials](#) and [manuals](#).

## Integrating OpenDS with Adempiere

### 1. Starting and Configuring OpenDS

OpenDS can be started using the [start-ds](#) utility. The first thing you would want to do after starting OpenDS is to import data.

For importing large data sets into OpenDS, read the instructions [here](#). In case the existing data is not in `ldif` format, [makeldif](#) tool should be used. To import data which is in `ldif` format, [import-ldif](#) tool can be used. The output of [makeldif](#) can be used with [import-ldif](#) to import data into server.

## OpenDS and Adempiere Integration: A How to Guide

Alternately, [ldapmodify](#) can be used to import LDIF file. This is what we are going to do in this example. To add a user, the small LDIF file shown below is used.

```
dn: uid=praneet.tiwari,dc=example,dc=comchangetype: add
objectClass: top
objectClass: person
objectClass: organizationalPerson
objectClass: inetOrgPerson
uid: praneet.tiwari
givenName: Praneet
sn: Tiwari
cn: Praneet Tiwari
mail: Praneet.Tiwari@sun.com
userPassword: password
```

Now [ldapmodify](#) can be used to import this user into OpenDS. The example below shows the use of ldapmodify on Windows.

```
C:\Program Files\openDs\bat>ldapmodify.bat -p 389 -a
-D"cn=Directory Manager" -w tiger -f c:\add.ldif
```

```
C:\Program Files\openDs\bat>
```

The [ldapsearch](#) utility can be used to search existing entries in the OpenDS server.

## 2. Starting and configuring Adempiere

## OpenDS and Adempiere Integration: A How to Guide

Adempiere server is started using RUN\_Server2 utility. The client is started using RUN\_Adempiere. On starting the client, a screen similar to the one shown below is presented. For now, let us not worry about the User ID and Password, that is what we are going to play around with.



Also, Adempiere comes with the following predefined users.

| Username    | Password    |
|-------------|-------------|
| System      | System      |
| SuperUser   | System      |
| GardenAdmin | GardenAdmin |

## OpenDS and Adempiere Integration: A How to Guide

|             |             |
|-------------|-------------|
|             |             |
| GardernUser | GardernUser |

### 3. Using OpenDS for authenticating Adempiere users

Summary of steps:

1. Login as "System". Password for the System user is "system". "System" is a predefined user with system management privileges.

## OpenDS and Adempiere Integration: A How to Guide

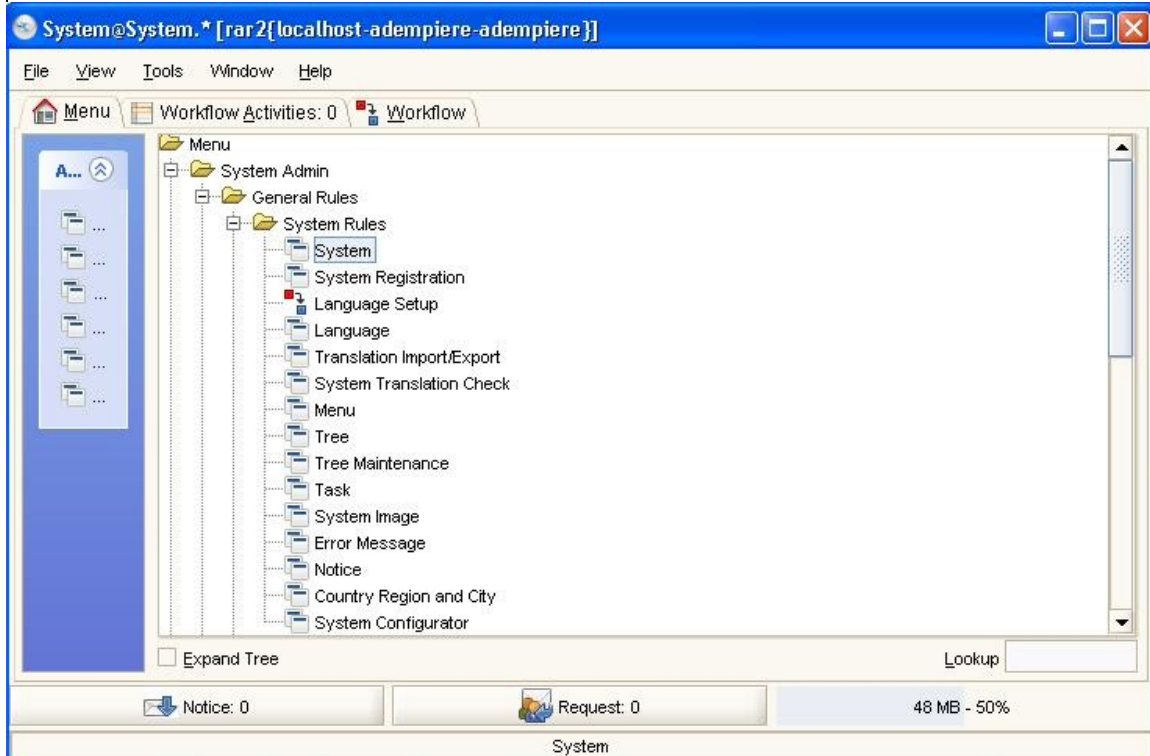


On logging in you would be presented with a screen similar to the one shown below. Just click on tick mark.



## OpenDS and Adempiere Integration: A How to Guide

2. Goto Menu->System Admin-> General Rules ->System



3. Fill the "LDAP Server field" in the screen presented next

## OpenDS and Adempiere Integration: A How to Guide

System localhost System@System.\* [rar2{localhost-adempiere-adempiere}]

File Edit View Go Tools Window Help

System

System Name localhost System Status Evaluation

Registered Email praneet@sun.com Password ●●●●●

Support Email Custom Prefix

Description

Release No 331b Version 2007-12-05

Database Name DB Address jdbc:postgresql://localhost:5432/adempiere

Internal Users 0 Processors 1

Replication Type Local

LDAP URL ldap://localhost:389 LDAP Domain localhost

Maintain Statistics Statistics C2U7B8P278L24M28

Error Reporting Profile GardenWorld|SYSTEM

Encryption Class

Support Expires Validate Support

Navigate or Update record 1/1

4. Logout and now login as SuperUser.

ADempiere Login

Connection Defaults

**ADempiere** Release 3.3.1b  
Smart Suite ERP, CRM and SCM 2007-12-05

Server rar2{localhost-adempiere-adempiere}

User ID SuperUser

Password ●●●●●

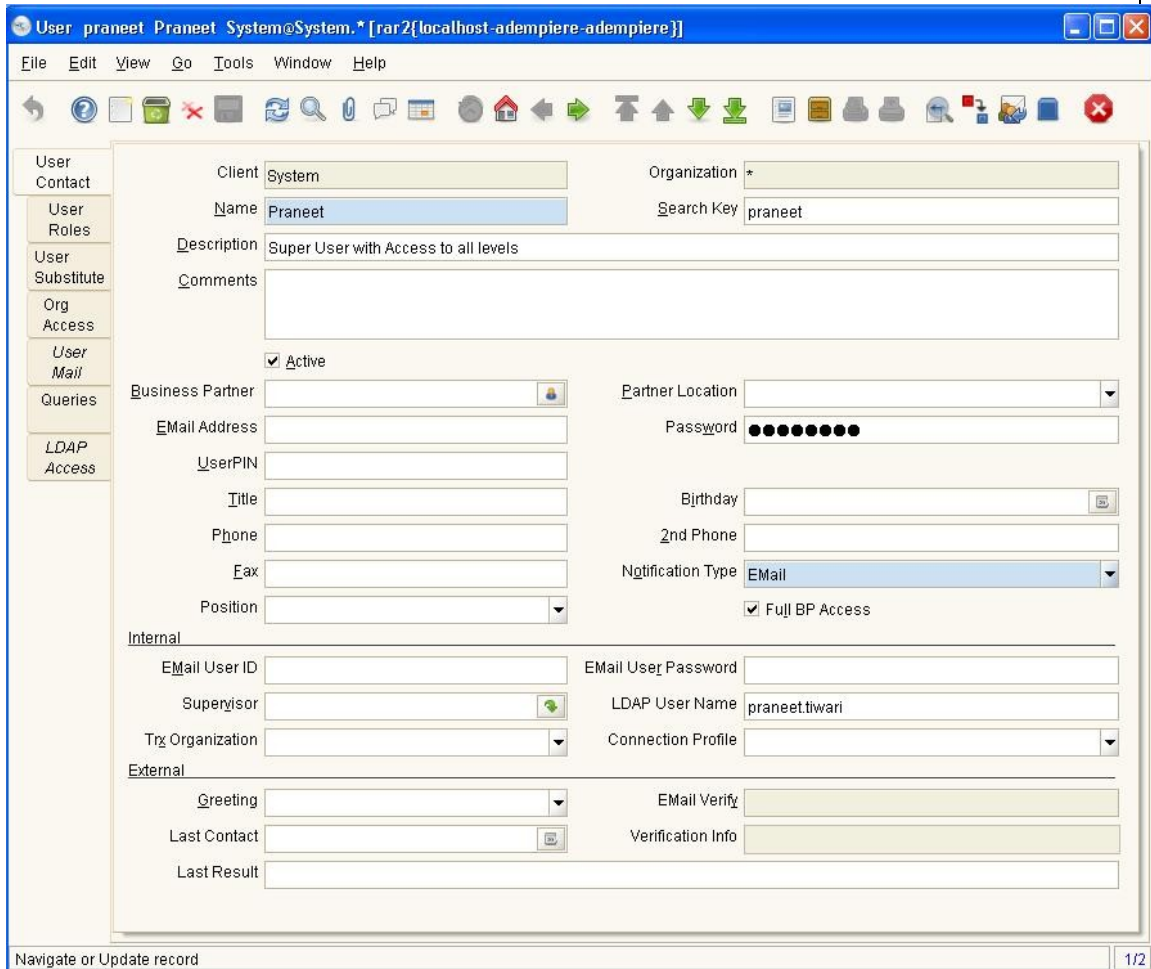
Language English

© 1999-2007 Adempiere ©

Not Connected

## OpenDS and Adempiere Integration: A How to Guide

5. Goto Menu->General Rules->Security->User
6. In user contact field, fill the Name field



The screenshot shows the Adempiere User Contact form for a user named 'praneet'. The form is titled 'User praneet Praneet System@System.\* [rar2{localhost-adempiere-adempiere}]'. The form is divided into several sections: 'User Contact', 'Internal', and 'External'. The 'User Contact' section includes fields for Client (System), Organization (\*), Name (Praneet), Search Key (praneet), Description (Super User with Access to all levels), and Comments. The 'Internal' section includes fields for Business Partner, Partner Location, EMail Address, Password (masked with dots), UserPIN, Title, Birthday, Phone, 2nd Phone, Eax, Notification Type (EMail), Position, Full BP Access (checked), EMail User ID, EMail User Password, Supervisor, LDAP User Name (praneet.tiwari), Trx Organization, and Connection Profile. The 'External' section includes fields for Greeting, EMail Verify, Last Contact, Verification Info, and Last Result. The form is displayed in a window with a menu bar (File, Edit, View, Go, Tools, Window, Help) and a toolbar with various icons. The status bar at the bottom indicates 'Navigate or Update record' and '1/2'.

7. Now you can start using the ldap username and password

## OpenDS and Adempiere Integration: A How to Guide

Adempiere Login

Connection Defaults

**ADempiere** Release 3.3.1b  
*Smart Suite ERP, CRM and SCM* 2007-12-05

Server rar2{localhost-adempiere-adempiere}

User ID praneet.tiwari

Password ●●●●●●●●

Language English

© 1999-2007 Adempiere ®

Not Connected