
Sun Java CAPS iConfigure User's Guide

Release 1.0.0



The information contained in this document is subject to change and is updated periodically to reflect changes to the applicable software. Although every effort has been made to ensure the accuracy of this document, Sun Microsystems Technology Corporation (Sun Microsystems) assumes no responsibility for any errors that may appear herein. The software described in this document is furnished under a License Agreement and may be used or copied only in accordance with the terms of such License Agreement. Printing, copying, or reproducing this document in any fashion is prohibited except in accordance with the License Agreement. The contents of this document are designated as being confidential and proprietary; are considered to be trade secrets of Sun Microsystems; and may be used only in accordance with the License Agreement, as protected and enforceable by law. Sun Microsystems assumes no responsibility for the use or reliability of its software on platforms that are not supported by Sun Microsystems.

Sun Microsystems, e*Gate, e*Way, and e*Xchange are the registered trademarks of Sun Microsystems Technology Corporation in the United States and/or select foreign countries. The Sun Microsystems logo, Sun Microsystems Integrated Composite Application Network Suite, eGate, eWay, elnsight, eVision, eXchange, eView, eIndex, eTL, ePortal, eBAM, and e*Insight are trademarks of Sun Microsystems Technology Corporation. The absence of a trademark from this list does not constitute a waiver of Sun Microsystems Technology Corporation's intellectual property rights concerning that trademark. This document may contain references to other company, brand, and product names. These company, brand, and product names are used herein for identification purposes only and may be the trademarks of their respective owners.

© 2004 by Sun Microsystems Technology Corporation. All Rights Reserved. This work is protected as an unpublished work under the copyright laws.

This work is confidential and proprietary information of Sun Microsystems and must be maintained in strict confidence.

Version 8th June 2007.

Contents

CONTENTS	3
LIST OF FIGURES	4
LIST OF TABLES	5
1 INTRODUCTION	6
1.1 About this Document	6
1.1.1 What's in This Document.....	6
1.1.2 Scope.....	6
1.1.3 Intended Audience	6
1.1.4 Document Conventions.....	6
1.1.5 Screenshots.....	7
1.2 Related Documentation	7
1.3 Sun Microsystems Web Site	7
2 OVERVIEW	8
2.1 Utility	8
2.2 Features	8
2.3 Pre-requisites	8
3 DEPLOYING FROM THE COMMAND LINE	9
3.1 Command-Line Deployment	9
3.2 Syntax	9
3.2.1 Convenience Script Files.....	10
3.3 Examples	10
3.3.1 Generate Example Config XML.....	10
3.3.2 Reconfiguring an EAR file.....	10
3.3.3 Reconfiguring and renaming an EAR file.....	10
4 DEPLOYING WITH APACHE ANT	11
4.1 Overview	11
4.2 Files	11
4.3 Build XML	11
4.4 Build Properties	12
4.5 Syntax	12
5 XML RECONFIGURATION	13
5.1 Overview	13
5.2 Configuration Delta File	13
5.2.1 Simple File to File.....	13
5.2.2 Simple Batch to JMS.....	17
5.2.3 Configuration Element Definition.....	23

List of Figures

FIGURE 6-1 SIMPLE FILE TO FILE.....	13
FIGURE 6-2 SIMPLE FILE INPUT.....	14
FIGURE 6-3 SIMPLE FILE OUTPUT.....	14
FIGURE 6-4 SIMPLE BATCH TO JMS.....	18
FIGURE 6-5 BATCH FILE CONFIGURATION.....	18

List of Tables

TABLE 1 DOCUMENT CONVENTIONS.....	6
TABLE 2 COMMAND LINE FLAGS.....	9
TABLE 3 ANT PROPERTIES.....	12
TABLE 4 CONFIGURATION ELEMENT DEFINITION.....	23

1 Introduction

This chapter introduces you to the *Sun Java CAPS iConfigure User's Guide* (Referred to as iConfigure), its general purpose and scope and its organisation. It also provides sources of related documentation and information.

What's in This Chapter

- [“About this Document” on page 6](#)
- [“Related Documentation” on page 7](#)
- [“Sun Microsystems Web Site” on page 7](#)
- [“” on page](#)

1.1 About this Document

1.1.1 What's in This Document

This Document includes the following chapters:

- “Introduction” – Introduces you to the *Sun Java CAPS iConfigure User's Guide*, its general purpose and scope and its organisation. It also provides sources of related documentation and information.
- “Overview” – This section summarises the functionality available within the current release, it provides details of the minimum pre-requisites for running the tool. It also describes the role that iConfigure plays within the JCAPS deployment Cycle.
- “Deploying from the Command line” – This chapter provides a reference that explains how to use services and utilities that can be run from the iConfigure application program interface (API) command line.
- “Deploying with Apache ANT” – Describes how to perform an application deployment using the Apache ANT interface.

1.1.2 Scope

The *Sun Java CAPS iConfigure User's Guide* contains information that System Administrator responsible for JCAPS J2EE Deployment require to successfully reconfigure a JCAPS project (EAR).

1.1.3 Intended Audience

This guide presumes that its reader is a developer or system administrator with the responsibility for setting up and/or maintaining the JCAPS J2EE system. This user/reader needs to have working knowledge of network operations and administration, as well as knowledge in the operation of UNIX, Linux, or Microsoft Windows 2000 (or Windows NT).

1.1.4 Document Conventions

The following conventions are observed through this document

Table 1 Document Conventions

Text	Convention	Example
Names of buttons, files, icons, parameters, variables, methods, menus and objects	Bold text	<ul style="list-style-type: none"> • Click OK to save and close. • From the File menu, select Exit. • Select the logicalhost.exe file. • Enter the timeout value.

Text	Convention	Example
		<ul style="list-style-type: none"> Use the getClassName() method. Configure the Inbound File eWay.
Command line arguments, code samples.	Fixed font. Variables are shown in <i>bold italic</i> .	Bootstrap -p <i>password</i>
Hypertext links	Blue text	See "Document Conventions on page 6 "
Hypertext links for Web addresses (URLs) or email addresses	Blue underlined text	http://www.sun.com

1.1.5 Screenshots

Depending on what tools you have installed and how they are configured the screenshots in this document may differ from what you see on your system.

1.2 Related Documentation

For more complete and detailed information on some of the aspects of this architecture, the reader is encouraged to pursue the following documents.

- *eGate Integrator User's Guide*
- *Sun Microsystems eBusiness Integration Suite Deployment Guide*
- *eGate System Administrators Guide*

1.3 Sun Microsystems Web Site

The Sun Microsystems Web site is your best source of up-to-the-minute product news and technical support information. The site's URL is :

<http://www.sun.com>

2 Overview

This section summarises the functionality available within the current release, it provides details of the minimum pre-requisites for running the tool. It also describes the role that iConfigure plays within the JCAPS deployment Cycle.

What' in This Chapter

- **“Utility” on page 8**
- **“Features” on page 8**
- **“Pre-requisites” on page 8**

2.1 Utility

The iConfigure tool is designed to provide the user with the ability to reconfigure Java CAPS ear file without using Enterprise Designer. Thus it allows for non Java CAPS trained staff to reconfigure and deploy applications.

2.2 Features

The current version of the utility provides the following features:

- **Command-line Interface:** Provide the ability to reconfigure / encrypt based on specified properties file information.
- **ANT Tasks:** Apache ANT Tasks allowing integration into full featured ANT deployment scripts.

2.3 Pre-requisites

Please ensure that the following pre-requisites are met before running the iConfigure utility.

- Apache ANT 1.6.2 (<http://ant.apache.org/>)
- Java J2SE 1.5.0 (<http://java.sun.com/j2se/index.jsp>)
- JAXB libraries (<http://java.sun.com/webservices/jwsdp/index.jsp>)
- Log4j 1.2.9 (<http://logging.apache.org/log4j/docs/>)

3 Deploying from the Command line

This chapter provides a reference that explains how to use services and utilities that can be run from the iConfigure application program interface (API) command line.

What's in This Chapter

- [“Command-Line” on page 9](#)
- [“Syntax” on page 9](#)
- [“Examples” on page 10](#)

3.1 Command-Line Deployment

The command-line API is the iConfigure primary interface and provides access to the full set of functionality available with the tool.

This section provides an overview of the iConfigure command-line API and then explains its basic usage properties, including text, naming and the format conventions used in this chapter.

3.2 Syntax

To display help about the iConfigure tool, enter the following command:

```
iConfigure -h
```

The Syntax of iConfigure is:

```
usage: IConfigure -w <Working Directory> -f <JCAPS Ear File> -n <Reconfigured Ear Name> -x
<Configuration XML File>

Required
-f - JCAPS Ear file to be converted
-x - Delta XML Configuration File

Optional
-w - Working directory that will be used to extract ear file for processing, default /tmp
-n - Name of the reconfigured Ear file, if this is not specified then the original ear is
overwritten.
-g - Generate an example Delta Configuration file for the specified ear
-h - Display this help
```

Table 2 describes the arguments

Note: Required Flags: Each table in this chapter, which describes a command and its flags, has a Required column. If this column says Required then the corresponding flag is required. If this column is empty, the flag is not required.

Table 2 Command Line Flags

Flag	Purpose	Required / Notes
Basic API Flags		
-h	Displays Help Message	Optional
-f	Name of the JCAPS Generated EAR File.	Required
-e	Identifies that the ear file is to be extracted.	Required

Flag	Purpose	Required / Notes
-n	Identifies that the ear file is to archived	Optional
-w	Working directory for iConfigure where ears will be extracted and edited.	Required for deployment
-x	Specifies the configuration xml file to be used / generated.	Required
-g	Indicates that an example configuration xml file should be generated for the specified EAR file.	Optional

3.2.1 Convenience Script Files

A number of convenience Microsoft Windows and UNIX Shell scripts have been provided to wrap the java command line and these can be found in the bin directory.

- IConfigure.bat / iConfigEar.bat / iConfigEar.sh – Reconfigure EAR File.
- IConfigureEncryption.bat / iConfigEarEncryption.bat / iConfigEarEncryption.sh – Encrypt specified String.
- IConfigureGenerate.bat / iConfigEarGenerate.bat / iConfigEarGenerate.sh – Generate a template XML file.

3.3 Examples

3.3.1 Generate Example Config XML

```
iConfigure -f c:\Temp\iConfigureDemoLocalReply.ear -w c:\Temp -x
C:\Temp\iConfigureDemoLocalReply.xml -g
```

3.3.2 Reconfiguring an EAR file

```
iConfigure -f C:\Ican\Test\EARDir\FileTransferiConfigure.ear -w
C:\Ican\Test\ExtractDir -x C:\Ican\Test\iConfigure\xml\ConfigDB.xml
```

3.3.3 Reconfiguring and renaming an EAR file

```
iConfigure -f C:\Ican\Test\EARDir\FileTransferiConfigure.ear -n
C:\Ican\Test\EARDir\ReconfiguredFileTransferi.ear -w
C:\Ican\Test\ExtractDir -x C:\Ican\Test\iConfigure\xml\ConfigDB.xml
```

4 Deploying with Apache ANT

This chapter describes how to perform an application deployment using the Apache ANT interface. All Script and XML files associated with the ANT interface can be found in the `/ant` subdirectory:

What's in This Chapter

- [“Overview” on page 11](#)
- [“Files” on page 11](#)
- [“Build XML” on page 11](#)
- [“Build Properties” on page 12](#)
- [“Syntax” on page 12](#)
- [“” on page 12](#)

4.1 Overview

The iConfigure configuration tool is built using Java and executes via an ANT script and hence will run on either Windows or UNIX platforms, requiring only JDK 1.5.0 or above. The installation ships all required jar files but the user will need to install ANT to execute the script.

The iConfigure ANT file (`iConfigureBuild.xml`) is configured using an associated properties file (`iConfigure.properties`)

4.2 Files

The files associated with the ANT interface are listed in `can` essentially be split into two types;

1. Command:
 - a. `iConfigure.ant.bat`
 - b. `iConfigureBuild.xml`
2. Configuration
 - a. `iConfigure.properties`
 - b. `setEnv.bat / setEnv.sh`

The `.bat` and `.sh` files essential just wrap the calls to ANT and thus facilitate easier use of the ANT interface, whilst the `.properties` and `.xml` files provide the core information required to deploy using the ANT interface.

4.3 Build XML

To facilitate an ANT interface iConfigure defines two ANT tasks:

- `com.sun.aph.ic.ant.IConfigureTask` (Reconfigure Ear Files)
- `com.sun.aph.ic.ant.IConfigureGenerateXMLTask` (Generate XML)

These can be integrated into any ANT script using the `taskdef` tag, as shown below:

```
<?xml version="1.0" encoding="UTF-8"?>
<project name="iConfigure" default="reconfigure" basedir=".">
  <taskdef name="iConfigure" classname="com.sun.aph.ic.ant.IConfigureTask"
  classpath="{classpath}"/>
```

```

        <taskdef                                name="iConfigureGenerateXML"
classname="com.sun.apl.ic.ant.IConfigureGenerateXMLTask" classpath="${classpath}"/>
        <target name="init">
            <property name="ear.name.src" value="${src.dir}/${project.name}.ear"/>
            <property                                name="ear.name.reconfigured"
value="${src.dir}/Reconfigured${project.name}.ear"/>
        </target>
        <target name="reconfigure" depends="init">
            <iConfigure                                srcEarFilename="${ear.name.src}"
xmlConfigurationFilename="${config.file}"
reconfiguredEarFilename="${ear.name.reconfigured}" workingDirectory="${working.dir}"/>
        </target>
        <target name="generateXML" depends="init">
            <iConfigureGenerateXML                                srcEarFilename="${ear.name.src}"
xmlConfigurationFilename="${config.file}" workingDirectory="${working.dir}"/>
        </target>
    </project>

```

4.4 Build Properties

The ANT Build properties file defines all the dynamic property information required by the ANT task to execute. The properties are described in Table 3.

Table 3 ANT Properties

Property	Description
project.name	Name of the EAR file without the .ear extension
config.file	Fully qualified name of the Configuration file
src.dir	Directory containing the EAR file
working.dir	Working Directory

Note: This properties file can be replaced by command-line parameters in the standard ANT format. To simplify Reconfiguration in bat files are provided to execute each of the tasks.

4.5 Syntax

The Syntax to Deploy is:

```
ant -buildfile iConfigureBuild.xml -propertyfile iConfigure.properties
deploy
```

This is encapsulated in the .bat and .sh files simplifying the deployment syntax to:

```
iConfigure.ant.bat
iConfigure.ant.sh
```

5 XML Reconfiguration

This chapter introduces the general principals of an JCAPS configuration and how we execute this using iConfigure.

What's in This Chapter

- “Overview” on page 13
- “Configuration Delta File” on page 13

5.1 Overview

The This section discusses the structure of the delta configuration file and shows how it relates to the JCAPS Enterprise Designer configuration.

5.2 Configuration Delta File

The iConfigure configuration file basically consists of a number of Name / Value pairs logically grouped by sections, components and processes. The Name / Values pair contained within this file defines the Delta changes that will be applied to the configuration information contained within the project ear file.

If we consider the XML define in the next section which define a set of configuration changes for the Connectivity Maps Figure 6-1 Simple File to File and Figure 6-4 Simple Batch to JMS. Based on these simple Connectivity Maps the XML defines the following edits.

5.2.1 Simple File to File

This Simple File to File connectivity map was configured within the Enterprise Designer Connectivity Map to read the input file from C:\Temp\input.xml (Figure 6-2 Simple File Input) and write to the file C:\Temp\OutboundFile%d.xml (Figure 6-3 Simple File Output).

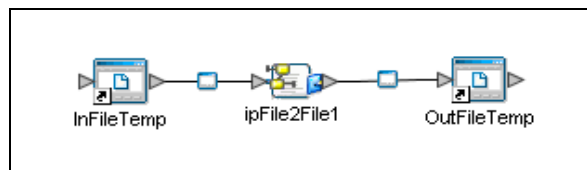


Figure 6-1 Simple File to File

The Configuration changes defined in the following XML extract change this configuration so that the inputs file is now located in C:\Temp\Inbound\input.txt whilst the outbound file is modified to C:\Temp\Outbound\output%d.txt. Section 5.2.3 Configuration Element Definition defines each of the elements used within the configuration file.

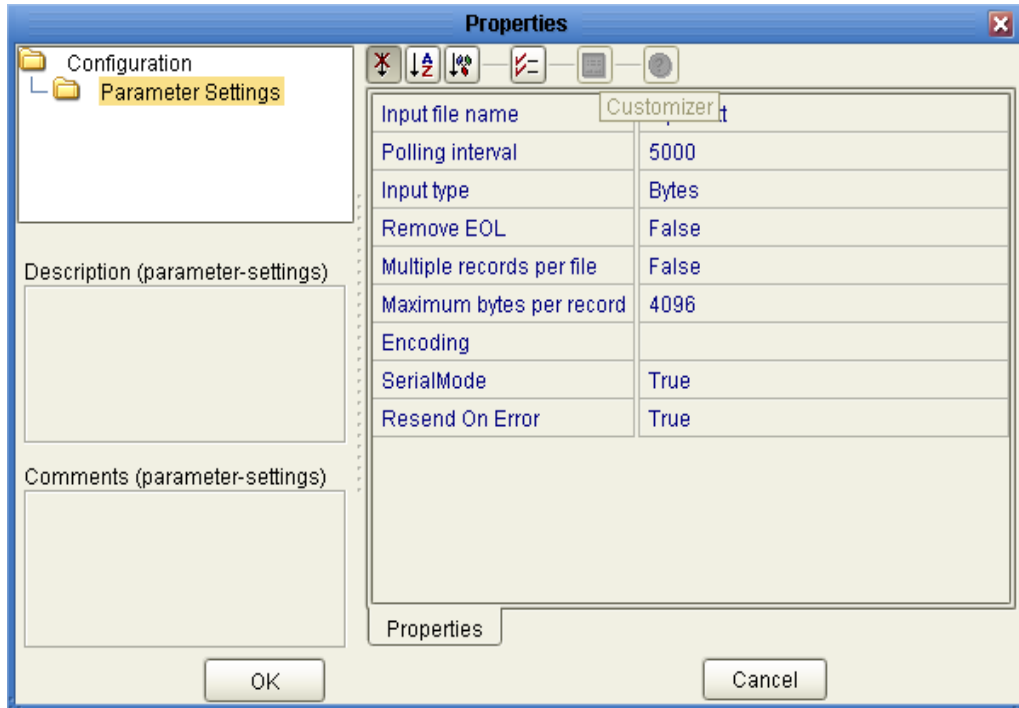


Figure 6-2 Simple File Input

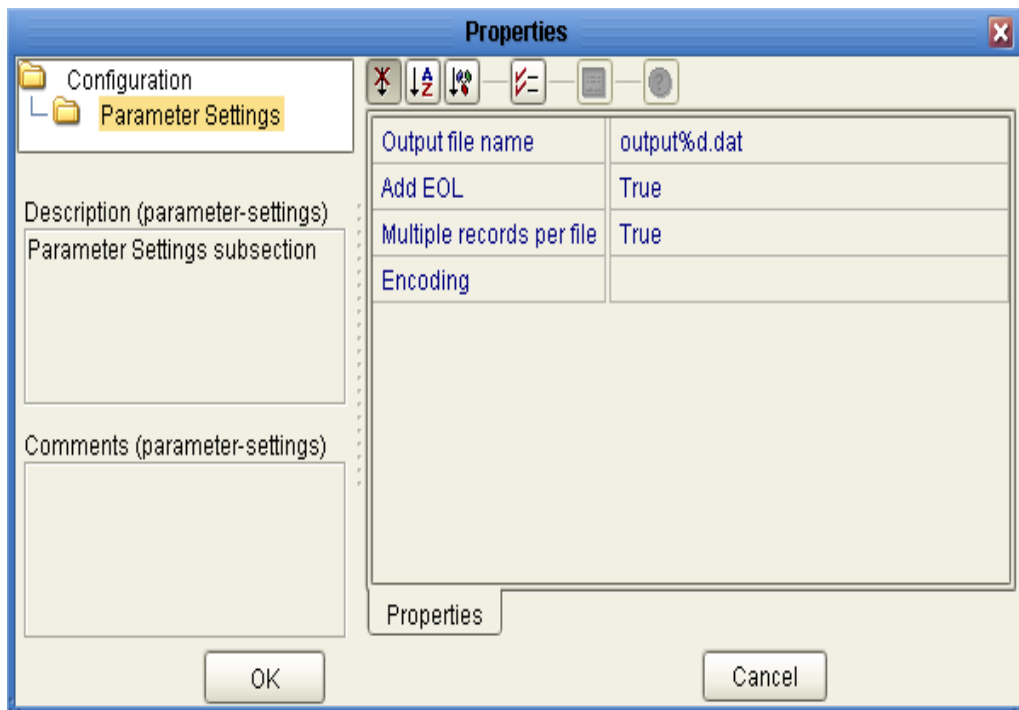


Figure 6-3 Simple File Output

```
<?xml version="1.0" encoding="UTF-8" standalone="yes"?>
<ns2:EarConfiguration xmlns:ns2="urn:com.sun.apf.ic.xml.delta.config">
  <Application XMLFilename="File1_cmFile2File_bpFileToFile1.jar"
Name="File1_cmFile2File_bpFileToFile1.jar" ArchiveType="jar">
    <EjbXMLConfiguration>
      <EnterpriseBean>
        <MessageBean EjbName="File1_cmFile2File_bpFileToFile1">
          <ConfigProperty>
```

```

        <Name>Configuration</Name>
        <Base64Configuration>
            <Header        version=""        user=""
revision="5.1.0.20040923">
                <UserComment/>
            </Header>
            <Section Name="parameter-settings">
                <Parameter    Name="InputFileMask"
IsLDAPDisabled="false" IsEncrypted="false">
                    <UserComment/>
                    <Value>input*.txt</Value>
                </Parameter>
                <Parameter
Name="PollMilliseconds" IsLDAPDisabled="false" IsEncrypted="false">
                    <UserComment/>
                    <Value>5000</Value>
                </Parameter>
                <Parameter    Name="InputType"
IsLDAPDisabled="false" IsEncrypted="false">
                    <UserComment/>
                    <Value>Bytes</Value>
                </Parameter>
                <Parameter    Name="RemoveEOL"
IsLDAPDisabled="false" IsEncrypted="false">
                    <UserComment/>
                    <Value>>false</Value>
                </Parameter>
                <Parameter
Name="MultipleRecordsPerFile" IsLDAPDisabled="false" IsEncrypted="false">
                    <UserComment/>
                    <Value>>false</Value>
                </Parameter>
                <Parameter
Name="MaxBytesPerRecord" IsLDAPDisabled="false" IsEncrypted="false">
                    <UserComment/>
                    <Value>4096</Value>
                </Parameter>
                <Parameter    Name="Encoding"
IsLDAPDisabled="false" IsEncrypted="false">
                    <UserComment/>
                </Parameter>
                <Parameter    Name="SerialMode"
IsLDAPDisabled="false" IsEncrypted="false">
                    <UserComment/>
                    <Value>>true</Value>
                </Parameter>
                <Parameter    Name="ResendOnError"
IsLDAPDisabled="false" IsEncrypted="false">
                    <UserComment/>
                    <Value>>true</Value>
                </Parameter>
                <Parameter    Name="Directory"
IsLDAPDisabled="false" IsEncrypted="false">
                    <UserComment/>
                    <Value>C:/temp</Value>
                </Parameter>
            </Section>
            <Section Name="MDB-settings">
                <Parameter    Name="MaxPoolSize"
IsLDAPDisabled="false" IsEncrypted="false">
                    <UserComment/>
                    <Value>1000</Value>
                </Parameter>
            </Section>
        </Base64Configuration>
    </ConfigProperty>
</MessageBean>

```

```

        </EnterpriseBean>
    </EjbXMLConfiguration>
</Application>
<Application XMLFilename="cmFile2File_bpFileToFile1_File2.rar"
Name="cmFile2File_bpFileToFile1_File2.rar" ArchiveType="rar">
    <RaXMLConfiguration>
        <ResourceAdapter>
            <ConfigProperty>
                <Name>RAConfiguration</Name>
                <Base64Configuration>
                    <Header version="" user="" revision="">
                        <UserComment/>
                    </Header>
                    <Section Name="config-property">
                        <Parameter
Name="EwayResourceAdapterClass" IsLDAPDisabled="false" IsEncrypted="false">
                            <UserComment/>
                            <Value>com.stc.connector.framework.eway.EwayResourceAdapterImpl</Value>
                        </Parameter>
                        <Parameter
Name="EwayResourceAdapterMBeanClass" IsLDAPDisabled="false" IsEncrypted="false">
                            <UserComment/>
                            <Value>com.stc.connector.management.jca.system.mbeans.STCRAMonitor</Value>
                        </Parameter>
                        <Parameter
Name="EwayResourceAdapterMBeanName" IsLDAPDisabled="false" IsEncrypted="false">
                            <UserComment/>
                            <Value>SeeBeyond:name=Project1_Dep1_Service1_File1</Value>
                        </Parameter>
                        <Parameter
Name="EwayName" IsLDAPDisabled="false" IsEncrypted="false">
                            <UserComment/>
                            <Value>File eWay</Value>
                        </Parameter>
                        <Parameter
Name="EwayDescription" IsLDAPDisabled="false" IsEncrypted="false">
                            <UserComment/>
                            <Value>Simple local directory
poller and file writer.</Value>
                        </Parameter>
                        <Parameter
Name="EwayVersion" IsLDAPDisabled="false" IsEncrypted="false">
                            <UserComment/>
                            <Value>5.1.3</Value>
                        </Parameter>
                        <Parameter
Name="SupportedModes" IsLDAPDisabled="false" IsEncrypted="false">
                            <UserComment/>
                            <Value>Inbound_Outbound</Value>
                        </Parameter>
                        <Parameter
Name="ConfigurationName" IsLDAPDisabled="false" IsEncrypted="false">
                            <UserComment/>
                            <UserComment/>
                        </Parameter>
                    </Section>
                </Base64Configuration>
                <Type>java.lang.String</Type>
            </ConfigProperty>
            <Outbound>
                <ConnectionDefinition>
                    <ManagedConnectionFactoryClass>com.stc.connector.framework.jca.system.STCManagedConnec
tionFactory</ManagedConnectionFactoryClass>
                </ConnectionDefinition>
            </Outbound>
        </ResourceAdapter>
    </RaXMLConfiguration>
</Application>
</Application>
</EjbXMLConfiguration>
</EnterpriseBean>

```

```

revision="5.1.0.20040923">
settings">
Name="OutputFileName" IsLDAPDisabled="false" IsEncrypted="false">
    <Value>output%d.dat</Value>
IsLDAPDisabled="false" IsEncrypted="false">
Name="MultipleRecordsPerFile" IsLDAPDisabled="false" IsEncrypted="false">
    <Value>true</Value>
IsLDAPDisabled="false" IsEncrypted="false">
Name="Directory" IsLDAPDisabled="false" IsEncrypted="false">
    <Value>C:/temp</Value>
</ns2:EarConfiguration>
    </Application>
    </RaXMLConfiguration>
    </ResourceAdapter>
    </Outbound>
    </ConnectionDefinition>
    </ConfigProperty>
    <Type>java.lang.String</Type>
    </Base64Configuration>
    </Section>
    </Parameter>
    </Parameter>
    <UserComment/>
    </Parameter>
    <Parameter Name="Encoding"
    <Value>true</Value>
    </Parameter>
    <UserComment/>
    <Value>true</Value>
    </Parameter>
    <Parameter Name="AddEOL"
    <UserComment/>
    </Parameter>
    </Parameter>
    <Parameter Name="parameter-
    </Header>
    <UserComment/>
    </Header>
    <Header version="" user=""
    </Base64Configuration>
    <Name>Configuration</Name>
    <ConfigProperty>

```

5.2.2 Simple Batch to JMS

The simple Batch to JMS connectivity map is was initially configured to read the batch file from C:\Temp\input.txt (Figure 6-5 Batch file Configuration). The configuration changes specified in the Configuration XML redefine this so that the Batch File will look in C:\Temp\Inbound for the file batchinput.txt.

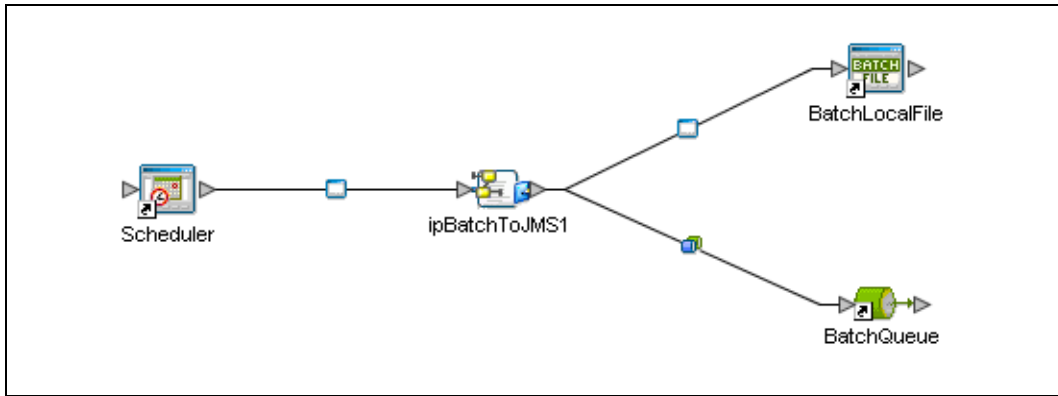


Figure 6-4 Simple Batch to JMS

Once the changes have been applied and the ear file deployed this process will look in the new location.

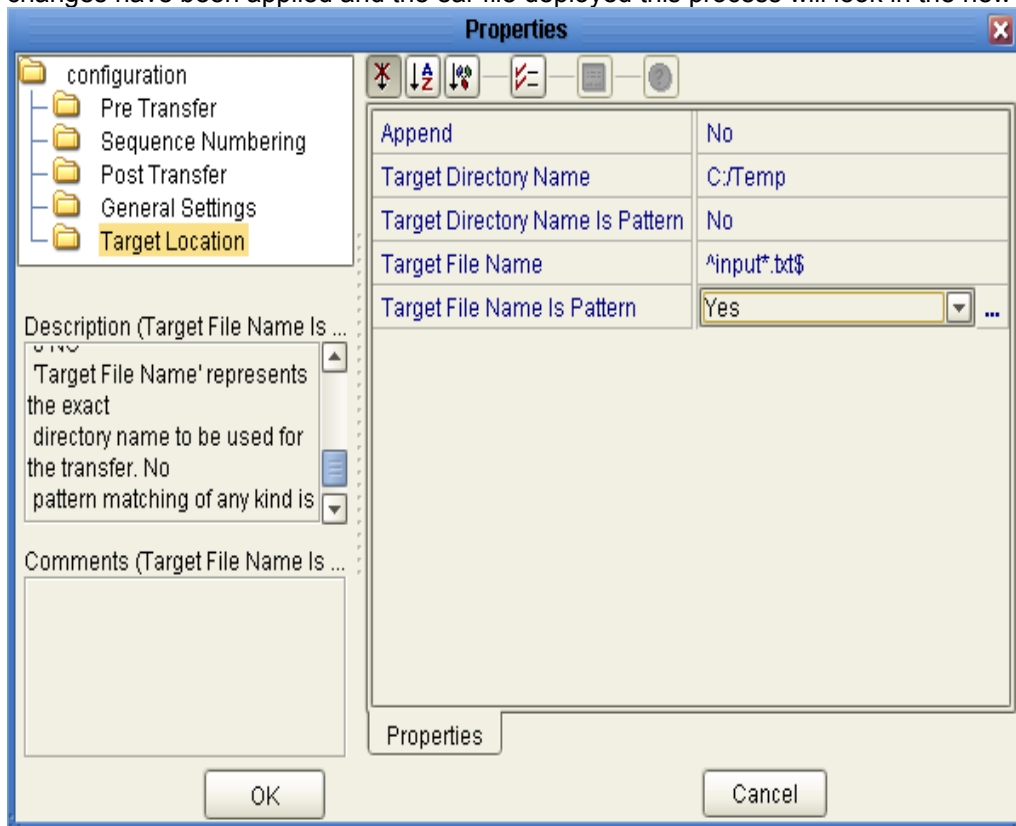


Figure 6-5 Batch file Configuration

```

<?xml version="1.0" encoding="UTF-8" standalone="yes"?>
<ns2:EarConfiguration xmlns:ns2="urn:com.sun.aph.ic.xml.delta.config">
  <Application XMLFilename="cmBatch2JMS_bpBatchToJMS1_Queue1.rar"
  Name="cmBatch2JMS_bpBatchToJMS1_Queue1.rar" ArchiveType="rar">
    <RaXMLConfiguration>
      <ResourceAdapter>
        <ConfigProperty>
          <Name>ConnectionURL</Name>
          <Value>stcms://</Value>
          <Type>java.lang.String</Type>
        </ConfigProperty>
        <ConfigProperty>
          <Name>UserName</Name>
          <Value>Administrator</Value>
        </ConfigProperty>
      </ResourceAdapter>
    </RaXMLConfiguration>
  </Application>
</ns2:EarConfiguration>
  
```

```

        <Type>java.lang.String</Type>
    </ConfigProperty>
</ConfigProperty>
    <Name>Password</Name>
    <Value>STC</Value>
    <Type>java.lang.String</Type>
</ConfigProperty>
</ConfigProperty>
    <Name>Options</Name>
    <Value>com.stc.jmsjca.core.XMCFQueueXA</Value>
    <Type>java.lang.String</Type>
</ConfigProperty>
</Outbound>
    <ConnectionDefinition>

<ManagedConnectionFactoryClass>com.stc.jmsjca.core.XMCFQueueXA</ManagedConnectionFactoryClass>
    </ConnectionDefinition>
    </ConnectionDefinition>

<ManagedConnectionFactoryClass>com.stc.jmsjca.core.XMCFTopicXA</ManagedConnectionFactoryClass>
    </ConnectionDefinition>
</Outbound>
</ResourceAdapter>
</RaXMLConfiguration>
</Application>
<Application XMLFilename="cmBatch2JMS_bpBatchToJMS1_BatchLocalFile1.rar"
Name="cmBatch2JMS_bpBatchToJMS1_BatchLocalFile1.rar" ArchiveType="rar">
    <RaXMLConfiguration>
        <ResourceAdapter>
            <ConfigProperty>
                <Name>RAConfiguration</Name>
                <Base64Configuration>
                    <Header version="" user="" revision="">
                        <UserComment/>
                    </Header>
                    <Section Name="config-property">
                        <Parameter
Name="EwayResourceAdapterClass" IsLDAPDisabled="false" IsEncrypted="false">
                            <UserComment/>
                            <Value>com.stc.connector.framework.eway.EwayResourceAdapterImpl</Value>
                        </Parameter>
                        <Parameter
Name="EwayResourceAdapterMBeanClass" IsLDAPDisabled="false" IsEncrypted="false">
                            <UserComment/>
                            <Value>com.stc.connector.management.jca.system.mbeans.STCRAMonitor</Value>
                        </Parameter>
                        <Parameter
Name="EwayResourceAdapterMBeanName" IsLDAPDisabled="false" IsEncrypted="false">
                            <UserComment/>
                            <Value>SeeBeyond:project=Project1,deployment=Dep1,collab=Collab1,external=File1</Value>
                        </Parameter>
                        <Parameter
Name="EwayName"
IsLDAPDisabled="false" IsEncrypted="false">
                            <UserComment/>
                            <Value>Batch eWay</Value>
                        </Parameter>
                        <Parameter
Name="EwayDescription"
IsLDAPDisabled="false" IsEncrypted="false">

```

```

                                <UserComment/>
                                <Value>SeeBeyond                                Batch
eWay.</Value>
                                </Parameter>
                                <Parameter                                Name="EwayVersion"
IsLDAPDisabled="false" IsEncrypted="false">
                                <UserComment/>
                                <Value>5.1.3</Value>
                                </Parameter>
                                <Parameter                                Name="SupportedModes"
IsLDAPDisabled="false" IsEncrypted="false">
                                <UserComment/>
                                <Value>Outbound</Value>
                                </Parameter>
                                <Parameter                                Name="ConfigurationTemplate"
IsLDAPDisabled="false" IsEncrypted="false">
                                <UserComment/>
                                <Parameter                                Name="ConfigurationInstance"
IsLDAPDisabled="false" IsEncrypted="false">
                                <UserComment/>
                                </Parameter>
                                </Section>
                                </Base64Configuration>
                                <Type>java.lang.String</Type>
                                </ConfigProperty>
                                <Outbound>
                                <ConnectionDefinition>

<ManagedConnectionFactoryClass>com.stc.connector.framework.jca.system.STCManagedConnec
tionFactory</ManagedConnectionFactoryClass>
                                <ConfigProperty>
                                <Name>Configuration</Name>
                                <Base64Configuration>
                                <Header                                version=""                                user=""
revision="">
                                <UserComment/>
                                </Header>
                                <Section                                Name="Pre Transfer">
                                <Parameter                                Name="Pre
Directory Name" IsLDAPDisabled="false" IsEncrypted="false">
                                <UserComment/>
                                </Parameter>
                                <Parameter                                Name="Pre
Directory Name Is Pattern" IsLDAPDisabled="false" IsEncrypted="false">
                                <UserComment/>
                                <Value>No</Value>
                                </Parameter>
                                <Parameter                                Name="Pre File
Name" IsLDAPDisabled="false" IsEncrypted="false">
                                <UserComment/>
                                </Parameter>
                                <Parameter                                Name="Pre File
Name Is Pattern" IsLDAPDisabled="false" IsEncrypted="false">
                                <UserComment/>
                                <Value>No</Value>
                                </Parameter>
                                <Parameter                                Name="Pre
Transfer Command" IsLDAPDisabled="false" IsEncrypted="false">
                                <UserComment/>
                                <Value>None</Value>
                                </Parameter>
                                </Section>
                                <Section                                Name="Sequence
Numbering">

```

```

Sequence Number" IsLDAPDisabled="false" IsEncrypted="false">
    <Parameter Name="Max
    <UserComment/>
    <Value>999999</Value>
    </Parameter>
Sequence Number" IsLDAPDisabled="false" IsEncrypted="false">
    <Parameter Name="Starting
    <UserComment/>
    <Value>1</Value>
    </Parameter>
</Section>
<Section Name="Post Transfer">
Directory Name" IsLDAPDisabled="false" IsEncrypted="false">
    <Parameter Name="Post
    <UserComment/>
    </Parameter>
Directory Name Is Pattern" IsLDAPDisabled="false" IsEncrypted="false">
    <Parameter Name="Post
    <UserComment/>
    <Value>No</Value>
    </Parameter>
Name" IsLDAPDisabled="false" IsEncrypted="false">
    <Parameter Name="Post File
    <UserComment/>
    </Parameter>
Name Is Pattern" IsLDAPDisabled="false" IsEncrypted="false">
    <Parameter Name="Post File
    <UserComment/>
    <Value>No</Value>
    </Parameter>
Transfer Command" IsLDAPDisabled="false" IsEncrypted="false">
    <Parameter Name="Post
    <UserComment/>
    <Value>None</Value>
    </Parameter>
</Section>
<Section Name="General Settings">
Reading Enabled" IsLDAPDisabled="false" IsEncrypted="false">
    <Parameter Name="Resume
    <UserComment/>
    <Value>No</Value>
    </Parameter>
Name="Synchronized" IsLDAPDisabled="false" IsEncrypted="false">
    <Parameter
    <UserComment/>
    <Value>Yes</Value>
    </Parameter>
Name="Transaction Type" IsLDAPDisabled="false" IsEncrypted="false">
    <Parameter
    <UserComment/>
    <Value>Non-
Transactional</Value>
    </Parameter>
Persistence Base Location" IsLDAPDisabled="false" IsEncrypted="false">
    <Parameter Name="State
    <UserComment/>
    </Parameter>
</Section>
<Section Name="connector">
Name="Property.Tag" IsLDAPDisabled="false" IsEncrypted="false">
    <Parameter
    <UserComment/>
    </Parameter>
IsLDAPDisabled="false" IsEncrypted="false">
    <Parameter Name="type"
    <UserComment/>

```

```

        <Value>LocalFile</Value>
                                                    </Parameter>
IsLDAPDisabled="false" IsEncrypted="false">
                                                    <Parameter      Name="class"
                                                    <UserComment/>

        <Value>com.stc.eways.batchext.LocalFileConnector</Value>
                                                    </Parameter>
</Section>
<Section      Name="Dynamic
Configuration">
    <Parameter Name="Action on
Malformed Command" IsLDAPDisabled="false" IsEncrypted="false">
        <UserComment/>
        <Value>Exit</Value>
    </Parameter>
    <Parameter      Name="Include
Order Record in Error Record" IsLDAPDisabled="false" IsEncrypted="false">
        <UserComment/>
        <Value>No</Value>
    </Parameter>
    <Parameter      Name="Publish
Status Record on Error" IsLDAPDisabled="false" IsEncrypted="false">
        <UserComment/>
        <Value>No</Value>
    </Parameter>
    <Parameter      Name="Include
Payload in Error Record" IsLDAPDisabled="false" IsEncrypted="false">
        <UserComment/>
        <Value>No</Value>
    </Parameter>
    <Parameter      Name="Publish
Status Record on Success" IsLDAPDisabled="false" IsEncrypted="false">
        <UserComment/>
        <Value>No</Value>
    </Parameter>
</Section>
<Section Name="Target Location">
    <Parameter      Name="Append"
IsLDAPDisabled="false" IsEncrypted="false">
        <UserComment/>
        <Value>No</Value>
    </Parameter>
    <Parameter      Name="Target
Directory Name" IsLDAPDisabled="false" IsEncrypted="false">
        <UserComment/>

        <Value>C:/Temp</Value>
                                                    </Parameter>
    <Parameter      Name="Target
Directory Name Is Pattern" IsLDAPDisabled="false" IsEncrypted="false">
        <UserComment/>
        <Value>No</Value>
    </Parameter>
    <Parameter      Name="Target
File Name" IsLDAPDisabled="false" IsEncrypted="false">
        <UserComment/>

        <Value>^input*.txt$</Value>
                                                    </Parameter>
    <Parameter      Name="Target
File Name Is Pattern" IsLDAPDisabled="false" IsEncrypted="false">
        <UserComment/>
        <Value>Yes</Value>
    </Parameter>
</Section>

```

```

settings">
    <Section Name="connection-pool-
        <Parameter
Name="MinPoolSize" IsLDAPDisabled="false" IsEncrypted="false">
            <UserComment/>
            <Value>2</Value>
        </Parameter>
        <Parameter
Name="MaxPoolSize" IsLDAPDisabled="false" IsEncrypted="false">
            <UserComment/>
            <Value>10</Value>
        </Parameter>
        <Parameter
Name="MaxIdleTimeoutInSeconds" IsLDAPDisabled="false" IsEncrypted="false">
            <UserComment/>
            <Value>300</Value>
        </Parameter>
    </Section>
</Base64Configuration>
<Type>java.lang.String</Type>
</ConfigProperty>
</ConnectionDefinition>
</Outbound>
</ResourceAdapter>
</RaXMLConfiguration>
</Application>
</ns2:EarConfiguration>

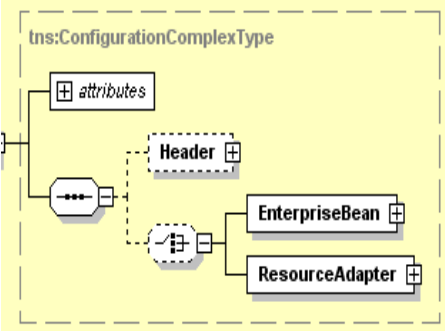
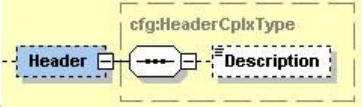
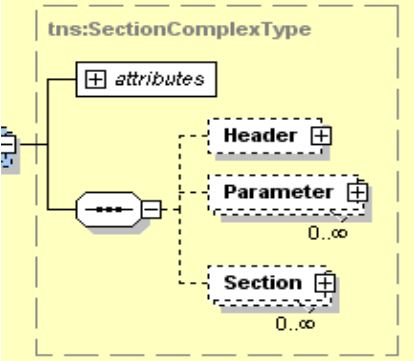
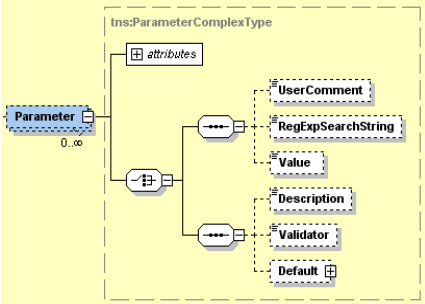
```

5.2.3 Configuration Element Definition

The following Table defines each of the elements and attribute contained within the configuration XML, the elements defined can be repeated within the XML as shown in .

Table 4 Configuration Element Definition

Element	Attribute	Description	Type
Application		Defines the Application information that is to be reconfigured. This groups all sections for a specific connections (applications)	Complex
	Name	Name of the application as defined in the application.xml, found within the ear	String

Configuration		Defines all the configuration for a specific connection for a given Business Process.	Complex
Header		Currently contains only a free text description	Complex
Description		Free Text description	String
Section		Contains the modification for a specific section of the configuration. This element is part of a repeating group, where a connector contains multiple sections. Additionally where the connector contains nested sections this element may occur as a recursive sub-element.	Complex
	Name	Section Name as defined for the specific eWay, these names are case sensitive.	String
Parameter		Defines the Parameter information for a specific section, the contents of this element will replace the existing value.	Complex
	Name	Parameter name to be replaced, the contents of this are case sensitive and are defined for a specific eWay.	String
	Encrypted	Defines if the Value is encrypted.	Boolean
	Value	Replacement value	String